

# ECB25

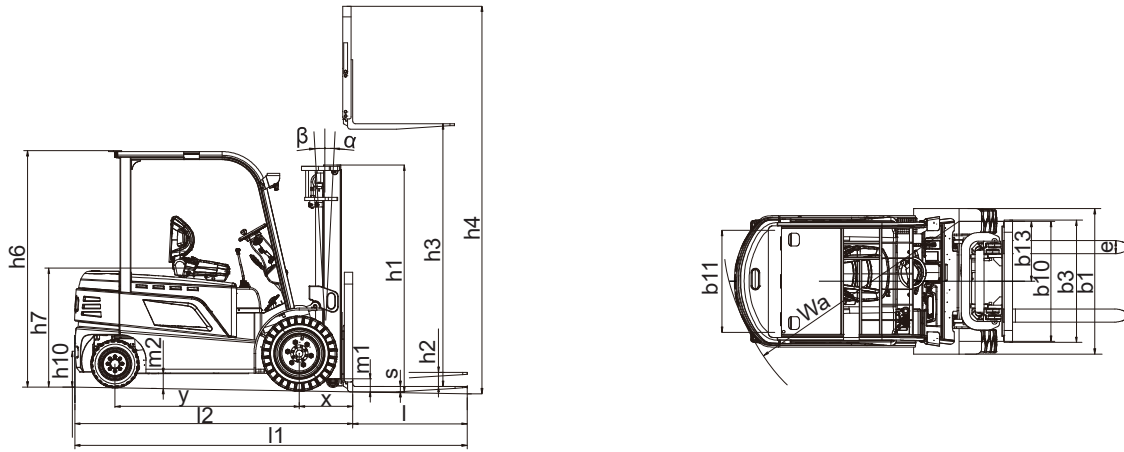
COUNTER BALANCE  
FORKLIFT SERIES



## NEW ENERGY FORKLIFT LEADER

BYD Efficient Lithium-Ion Electric Forklift

[byd-forklifts.com](http://byd-forklifts.com)



## STANDARD FEATURES

### Safety

- Electric braking system
- Slope protection
- Multi-functional seat with safe belt
- Operator Presence Sensing (OPS)
- Programmable automatic speed limit
- Cylinder lowering speed limit
- Charger protection
- Overload protection
- High loading position protection
- Strobe light and reversing alarm
- LED headlights and rear combination lights

### Performance

- Iron-phosphate Battery
- AC drive system
- AC hydraulic lift system
- Small turning radius
- Battery rapid charging & opportunity charging
- Programmable performance
- Digital (LCD) multifunction display
  - Time & date
  - OPS time accumulator
  - Battery capacity indicator
  - Over-discharge warning (lift interrupt)
  - Parking brake indicator
- Direction indicator
- Maintenance indicator
- Overload indicator
- Built-in analyzer
- Self-diagnostics

### Operability & Ergonomics

- Strategically configured instrument
- Front & rear operator assist grips
- Automatic fork-leveling control
- Hydraulic directional shift control
- Seat-mounted Mini dual joystick
- Heavy-duty slip-resistant floor mat
- Bay with USB port
- Bay with Cup holder
- Parking brake alarm

### Serviceability

- AC drive motor (no brushes or commutator)
- AC hydraulic motor (no brushes or commutator)
- Charging port analyzing connection
- Easy-access no-tools floorboard
- Maintenance-free battery case
- Easy-lift battery hood
- Hydraulic fluid level check
- Easy-access controllers
- CAN-bus controller wiring

## OPTIONAL EQUIPMENT

### Load Handling (Wide visible mast)

- Standard lift 2-stage mast (Duplex standard)
- Full free-lift 2-stage mast (Duplex FFL)
- Full free-lift 2-stage 2-cylinder mast (Duplex FFL)
- Lifting buffer
- Standard lift 3-stage mast (Triplex standard)
- Full free-lift 3-stage 3-cylinder mast (Triplex FFL)
- Full free-lift 3-stage 4-cylinder mast (Triplex FFL)
- Lifting speed limit
- Other customized fork
- High-load backrest
- Other customized load backrest

### Load Handling (Hose & Valve Assembly)

- 4-way valve (no 3rd & 4th function hosing)
- 4-way valve (with 3rd function hosing)
- 4-way valve (with 3rd & 4th function hosing)
- Hydraulic DV10 fitting on 3rd lever
- Hydraulic DV10 fitting on 4th lever
- Cascade hang-on side shifter
- Integral side shifter
- Fork positioners
- Clamps
- Rotators
- Load pushes
- Multiple load handlers
- Mobile weighing
- Layer pickers
- Hose reels

### Lights & Indicators

- Front headlights
- Rear combination lights
- LED Distance Warning spot Light
- LED Distance Warning Laser Light
- Strobe light, yellow (on top of OHG)
- Back up buzzer
- Armrest horn

### Body

- Operator Presence Sensing Unit
- Fork camera
- Reversing radar
- Reversing camera
- Fan
- Fire extinguisher
- Overload protection
- Parking brake alarm
- Rearview mirrors (left & right sides)
- Flat internal rearview mirror
- Panoramic rearview mirror
- Rear assist grip with horn button
- Orange seatbelt
- Cabin without woors (Includes windshield with wiper, roof & rear glass)
- Full sealing cabin (Includes windshield with wiper & roof)
- Front windshield with wiper & Roof
- Synchronous steering
- Special key
- Bay with USB inlet
- Fork sleeves
- Overhead guard sheet
- Double accelerator pedal (One on each side of brake pedal)

### Wheels & Tires

- Solid
- Non-marking solid
- Pneumatic

## COUNTER BALANCE FORKLIFT SPECIFICATIONS

Characteristic	Manufacturer				BYD		BYD	
	Model				ECB25B/ECB25C		ECB25D/ECB25E	
	Power Unit				Electric		Electric	
	Operation				Seat		Seat	
	Load Capacity	Q	lbs	kg	5512	2500	5512	2500
	Load Centre	c	in	mm	20	500	20	500
	Axle Centre To Force Face	x	in	mm	17	425	17	425
	Wheel Base	y	in	mm	59	1505	59	1505
Weights	Service Weight		lbs	kg	9259	4200	9303	4220
	Axle Load With Load, Front/rear		lbs	kg	12811/1960	5811/889	12853/1962	5830/890
	Axle Load Without load, Front/rear		lbs	kg	3913/5346	1775/2425	3953/5351	1793/2427
Wheels	Tyre Rubber, SE, Pneumatic, Polyurethane				SE		SE	
	Tyre Size, Front				21x8-9		21x8-9	
	Tyre Size, Rear				18x7-8		18x7-8	
	Wheels, Number Front/rear (x = driven)				2x/2		2x/2	
	Track Width, Front	b10	in	mm	39	1000	38	970
	Track Width, Rear	b11	in	mm	38	955	38	955
Dimensions	Mast/fork Carriage Tilt, Forward/backward	$\alpha/\beta$	°	°	5/8		5/8	
	Height Of Mast, Lowered	h1	in	mm	80	2030	78	1990
	Free Lift	h2	in	mm	6	140	6	140
	Lift	h3	in	mm	118	3000	118	3000
	Height Of Mast, Extended	h4	in	mm	159	4040	159	4040
	Height Of Overhead Guard (Cabin)	h6	in	mm	86	2195	86	2195
	Height Of Seat/stand On Platform	h7	in	mm	43	1100	43	1100
	Towing Coupling Height	h10	in	mm	13	333	13	333
	Overall Length	l1	in	mm	133	3375	133	3375
	Length To Fork Face	l2	in	mm	91	2305	91	2305
	Overall Width	b1	in	mm	47	1195	47	1195
	Fork Dimensions	s/e/l	in	mm	2/5/42	40/120/1070	2/5/42	40/120/1070
	Fork Carriage To ISO 2328, Class/type A, B				2A		2A	
	Width Of Fork Carriage	b3	in	mm	43	1085	43	1085
	Ground Clearance, Below Mast	m1	in	mm	4	95	4	95
	Ground Clearance, Centre Of Wheelbase	m2	in	mm	4	105	4	100
	Aisle Width With Pallet 1000x1200 Across Forks	Ast	in	mm	144	3646	144	3646
	Aisle Width With Pallet 800x1200 Along Forks	Ast	in	mm	151	3845	151	3845
Turning Radius	Wa	in	mm	80	2020	80	2020	
Minimum Pivoting Point Distance	b13	in	mm	22	555	22	555	
Performance	Travel Speed, With/without Load		mph	Km/h	12/12	20/20	9/9	15/15
	Lifting Speed, With/without Load		ft/min	mm/s	83/89	420/450	83/89	420/450
	Lowering Speed, With/without Load		ft/min	mm/s	98/79	500/400	98/79	500/400
	Tractive Force, With/without Load		KN	KN	12.5/9.5		12.5/9.5	
	Climbing Ability, With/without Load		%	%	20/20		15/20	
	Acceleration Time, With/without Load		s	s	4.9/4.3		4.9/4.3	
	Service Brake				Hydraulic		Hydraulic	
Drive	Drive Motor, 60 Minute Rating		HP	kW	10.7x2	8x2	11	8.5
	Lift Motor, Rating at S3 15%		HP	kW	28	20.7	28	20.7
	Battery Voltage/Rated Capacity		V/Ah	V/Ah	80/270		80/270	
	Battery Weight		lbs	kg	772	350	772	350
Others	Type Of Drive Control				AC		AC	
	Operating Pressure For Attachments		Mpa	Mpa	16.8		16.8	
	Noise Level At Pperator's Ear		dB(A)	dB(A)	≤75		≤75	
	Traction Pin Connections				PIN		PIN	

## MAST SPECIFICATIONS

- h1** Height, Mast Fully Lowered    **h2<sup>1</sup>** Full Free Lift Height (xxx mm Load Backrest)    **h4** Height, Mast Fully Extended  
**h3** Lifting Height    **h2<sup>2</sup>** Full Free Lift Height (without Load Backrest)    **α** Tilt Forward    **β** Tilt Backward

ECB25B ECB25C	h3	h2 <sup>1</sup> (950mm)	h2 <sup>2</sup>	h1	h4	α	β	Residual Capacity (without attachment) lbs (kg) @610mm
	in (mm)	in (mm)	in (mm)	in (mm)	in (mm)	deg	deg	
2-stage standard Mast	118(3000)	6(140)	6(140)	80(2030)	157(3990)	5°	8°	5510(2500)
	130(3300)	6(140)	6(140)	86(2180)	169(4290)	5°	8°	5415(2455)
	138(3500)	6(140)	6(140)	90(2280)	177(4490)	5°	8°	5325(2415)
	157(4000)	6(140)	6(140)	102(2580)	196(4990)	5°	8°	5070(2300)
	177(4500)	6(140)	6(140)	111(2830)	216(5490)	5°	5°	4795(2175)
2-stage with single FFL	118(3000)	44(1110)	58(1472)	81(2060)	157(3990)	5°	8°	5510(2500)
	130(3300)	50(1260)	64(1622)	87(2210)	169(4290)	5°	8°	5415(2455)
	138(3500)	54(1360)	68(1722)	91(2310)	177(4490)	5°	8°	5325(2415)
	157(4000)	63(1610)	78(1972)	101(2560)	196(4990)	5°	8°	5070(2300)
	177(4500)	63(1610)	78(1972)	101(2560)	196(4990)	5°	8°	5070(2300)
3-stage with double FFL	157(4000)	39(1000)	54(1362)	77(1950)	196(4990)	5°	5°	5070(2300)
	177(4500)	46(1160)	60(1522)	83(2110)	216(5490)	5°	5°	4795(2175)
	189(4800)	50(1260)	64(1622)	87(2210)	228(5790)	5°	5°	4660(2110)
	197(5000)	52(1325)	66(1687)	90(2275)	236(5990)	5°	5°	4310(1955)
	217(5500)	59(1510)	74(1872)	97(2460)	256(6490)	5°	5°	4090(1855)
	236(6000)	68(1720)	82(2082)	105(2670)	275(6990)	5°	5°	3885(1760)
3-stage with single FFL	157(4000)	38(975)	53(1337)	76(1925)	196(4990)	5°	5°	5070(2300)
	177(4500)	45(1135)	59(1497)	82(2085)	216(5490)	5°	5°	4795(2175)
	189(4800)	49(1235)	63(1597)	86(2185)	228(5790)	5°	5°	4660(2110)
	197(5000)	51(1295)	65(1657)	88(2245)	236(5990)	5°	5°	4310(1955)
	217(5500)	59(1495)	73(1857)	96(2445)	256(6490)	5°	5°	4090(1855)
	236(6000)	67(1705)	81(2067)	105(2655)	275(6990)	5°	5°	3885(1760)
	256(6500)	73(1865)	88(2227)	111(2815)	295(7490)	5°	3°	3700(1680)

ECB25D ECB25E	h3	h2 <sup>1</sup> (1200mm)	h2 <sup>2</sup>	h1	h4	α	β	Residual Capacity (without attachment) lbs (kg) @610mm
	in (mm)	in (mm)	in (mm)	in (mm)	in (mm)	deg	deg	
2-stage standard Mast	118(3000)	6(140)	6(140)	78(1990)	167(4240)	5°	9°	5510(2500)
	138(3500)	6(140)	6(140)	90(2290)	187(4740)	5°	9°	5325(2415)
	157(4000)	6(140)	6(140)	100(2540)	206(5240)	5°	9°	5070(2300)
	177(4500)	6(140)	6(140)	112(2840)	226(5740)	5°	6°	4795(2175)
	197(5000)	6(140)	6(140)	122(3090)	246(6240)	5°	6°	4310(1955)
2-stage with single FFL	118(3000)	33(840)	57(1447)	80(2040)	167(4240)	5°	9°	5510(2500)
	138(3500)	43(1090)	67(1697)	90(2290)	187(4740)	5°	9°	5325(2415)
	157(4000)	53(1340)	77(1947)	100(2540)	206(5240)	5°	9°	5070(2300)
3-stage with single FFL	157(4000)	29(743)	53(1350)	76(1943)	206(5240)	5°	6°	5070(2300)
	177(4500)	35(893)	59(1500)	82(2093)	226(5740)	5°	6°	4795(2175)
	189(4800)	39(993)	63(1600)	86(2193)	238(6040)	5°	6°	4660(2110)
	197(5000)	43(1093)	67(1700)	90(2293)	246(6240)	5°	6°	4310(1955)
	217(5500)	51(1293)	75(1900)	98(2493)	265(6740)	5°	6°	4090(1855)
	236(6000)	59(1493)	80(2040)	106(2693)	285(7240)	5°	6°	3885(1760)
256(6500)	65(1643)	89(2250)	112(2843)	305(7740)	5°	3°	3700(1680)	

BYD Forklift production site is certified:

**ISO 9001 ISO 14001 OHSAS 18001**



BYD trucks conform to the  
United States Safety Requirements  
All BYD forklifts comply with ANSI B56.1



BYD Motors LLC    ☎ 661-940-3255    ✉ sales@byd-forklifts.com    🌐 byd-forklifts.com