

P20PS/P20PS-U



PALLET TRUCK WAREHOUSE SERIES



NEW ENERGY FORKLIFT LEADER

STANDARD FEATURES

Safety

- Electric braking system
 - Programmable Speed controlling
 - Power-off protection
 - Emergency switch
 - Multi-functional handle
 - Turning speed limit
-

Performance

- Iron-phosphate battery
 - AC drive system
 - DC lifting system
 - Small turning radius
 - Rapid charging & opportunity charging
 - Digital (LCD) multifunction display
 - Alarm light
 - Maintenance indicator
 - Low speed indicator
 - Error code
 - Self-diagnostics
 - Built-in analyzer
 - Power nap
 - Flexible application opportunities
-

Operability & Ergonomics

- Automatic parking brake
 - Easy connection charging port
-

Serviceability

- AC drive motor (no brushes or commutator)
 - DC lifting motor
 - Analyzing connection at charging port
 - Maintenance-free battery case
 - Easy-access controllers
 - Easy-lift battery hood
-

OPTIONAL EQUIPMENT

Load Handling

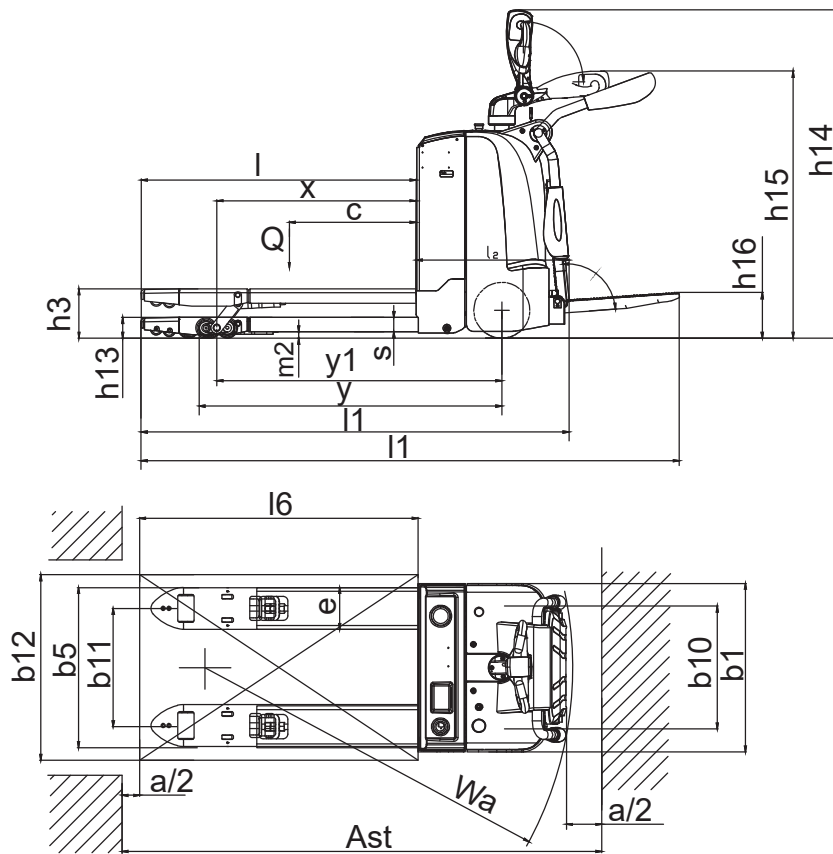
- Customized fork
 - Customized load backrest
-

Wheels & Tires

- Standard polyurethane wheel
- Anti-skid wheel

PALLET TRUCK SPECIFICATIONS

Characteristic	Manufacturer				BYD	BYD
	Model				P20PS	P20PS-U
	Drive Type				Electric	Electric
	Operator Type				Stand-on	Stand-on
	Load Capacity	Q	lbs	kg	4409 2000	4409 2000
	Load Center	c	in	mm	24 600	24 600
	Load Distance, Center of Support Arm Wheel to Face of Forks	x	in	mm	41 1036	38 966
	Wheel Base	y	in	mm	54/57 1381/1443	52/54 1311/1373
Weights	Weight (Incl. Battery)		lbs	kg	1433 650	1433 650
	Axle Load with Load, Front/Rear		lbs	kg	2535/3307 1150/1500	2535/3307 1150/1500
	Axle Load without Load, Front/Rear		lbs	kg	1146/287 520/130	1146/287 520/130
Wheels	Wheel Type				Polyurethane	Polyurethane
	Wheel Size, Front	Φ x w		mm	Φ230×75	Φ230×75
	Wheel Size, Rear	Φ x w		mm	Φ85×110	Φ85×110
	Additional Wheel Spec.	Φ x w		mm	Φ100×50	Φ100×50
	Wheel Number, Front/Rear (x=Driven Wheels)				1x+2/2(4)	1x+2/2(4)
	Track Width, Front	b10	in	mm	20 510	20 510
	Track Width, Rear	b11	in	mm	20 505	15 370
Dimensions	Lifting Height	h3	in	mm	5 120	5 120
	Operation Handle Height when Horizontally/Middle Position	h15	in	mm	38 970	38 970
	Operation Handle Height when in Middle Position	h14	in	mm	51 1300	51 1300
	Pedal Height	h16	in	mm	7 180	7 180
	Lowered Height	h13	in	mm	3 85	3 85
	Total Length (Pedal Retrieve / Put down)	l1	in	mm	74/93 1890/2360	72/90 1820/2290
	Length to the Face of Forks	l2	in	mm	26 670	26 670
	Overall Width	b1	in	mm	29 726	29 726
	Fork Dimension	s/e/l	in	mm	2x7x48 55×180×1220	2x7x45 55×180×1150
	Width over Forks	b5	in	mm	27 685	22 550
	Ground Clearance, Center of Wheelbase	m2	in	mm	1 30	1 30
	Aisle Width for Pallet 800*1200 Lengthways	Ast	in	mm	78/97 1989/2473	76/95 1919/2403
	Turning Radius	Wa	in	mm	69 1750	66 1680
Performance	Travel Speed, with/without Load		mph	km/h	3.8/3.8 6/6	5.6/7.5 9/12
	Lift Speed, with/without Load		ft/min	mm/s	79/98 40/50	79/98 40/50
	Lowering Speed, with/without Load		ft/min	mm/s	98/79 50/40	98/79 50/40
	Gradability, Fully Loaded / Empty Loaded			%	8/15	8/15
	Service Brake				Electric	Electric
	Drive Motor Power		HP	kw	1.7 1.3	2.5 1.9
	Lifting Motor Power		HP	kw	1.6 1.2	1.6 1.2
	Type of Drive Control				AC	AC
	Battery Voltage / Capacity			V/Ah	24/130	24/130
	Battery Weight		lbs	kg	154 70	154 70
	Noise			dB(A)	<70	<70



BYD Forklift production site is certified:
ISO 9001 ISO 14001 OHSAS 18001

